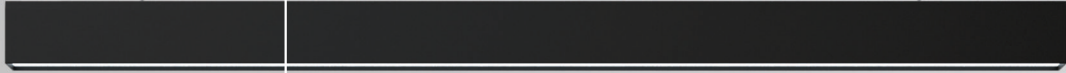


Powered by

tuya<sup>®</sup>

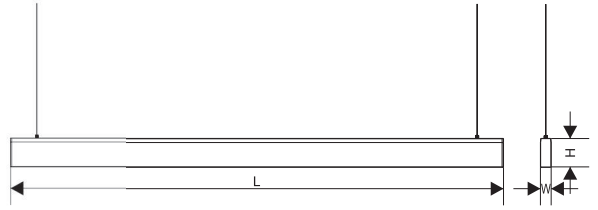
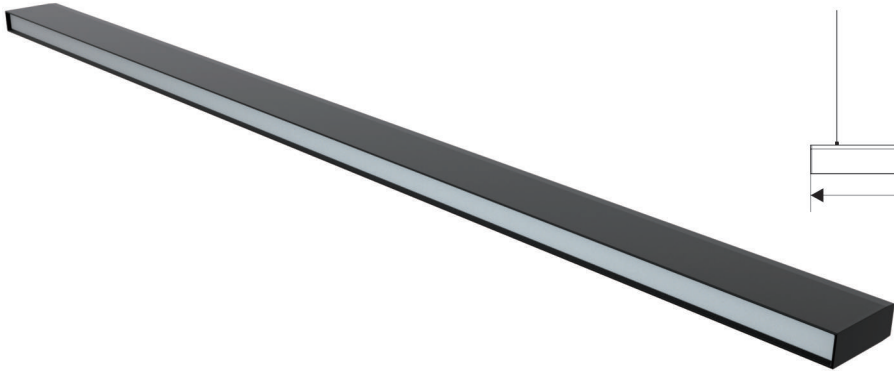
Intelligence  
Inside



# W INNER SERIES

OFFICE TASK WITH EFFICIENCY. COMFORTABLE LIGHTING  
AND HEALTHY LIGHTING. TOWARDS EYES AND ATTITUDE.

# WINNER.



**Parameters**

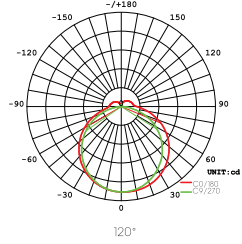
Model	Power	LED Qty	Luminous Flux	Efficacy	Size
2670P2	36W	2835SMD/3V-0.5W/132LEDS	1500LM	60Lm/W	1195*26*70mm

Input Voltage:AC180-240V  
 Frequency:50/60Hz  
 Power Factors:≥0.5  
 CCT:4000~6500K  
 CRI:Ra≥80  
 Beam Angle:120°  
 Main Material:Aluminum+PS  
 Body Color:Sand Black  
 Input Cable:0.5mm<sup>2</sup>  
 Installation:N/A  
 Protection:IP20  
 Environment:-20°C~50°C  
 Longevity:20000h  
 Driver:3AAA Constant Current

**LUMILEDS**  
LED inside

**Packing**

Model	Weight/PC	Qty/CTN	Inner Box Size	Master CTN
2670P2	1kg	5	-	128*14*8.5cm



**DETAILS**

